



Mobile Network Solutions
Akamai's Emerging Mobile Business Unit

Will Law – Chief Architect, Media Division, Akamai.
Video Over 5G Workshop, August 2015, San Diego

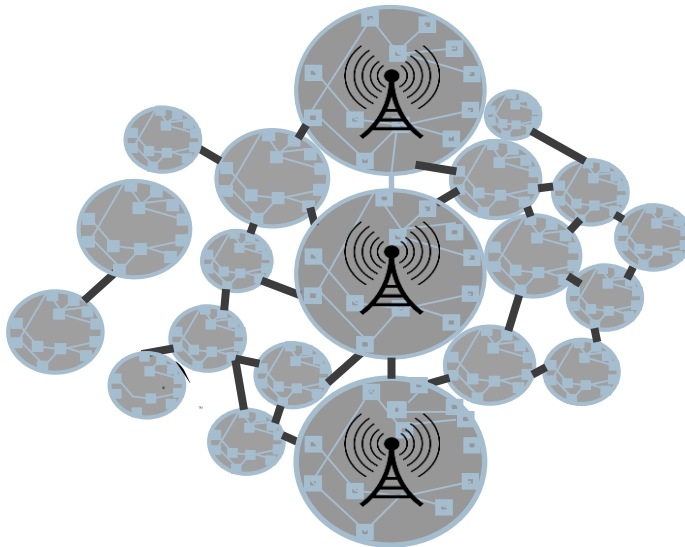
The Many-to-Many World of CPs and MNOs



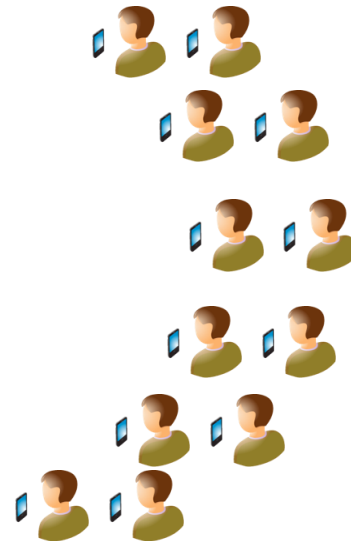
Thousands of
Content Providers



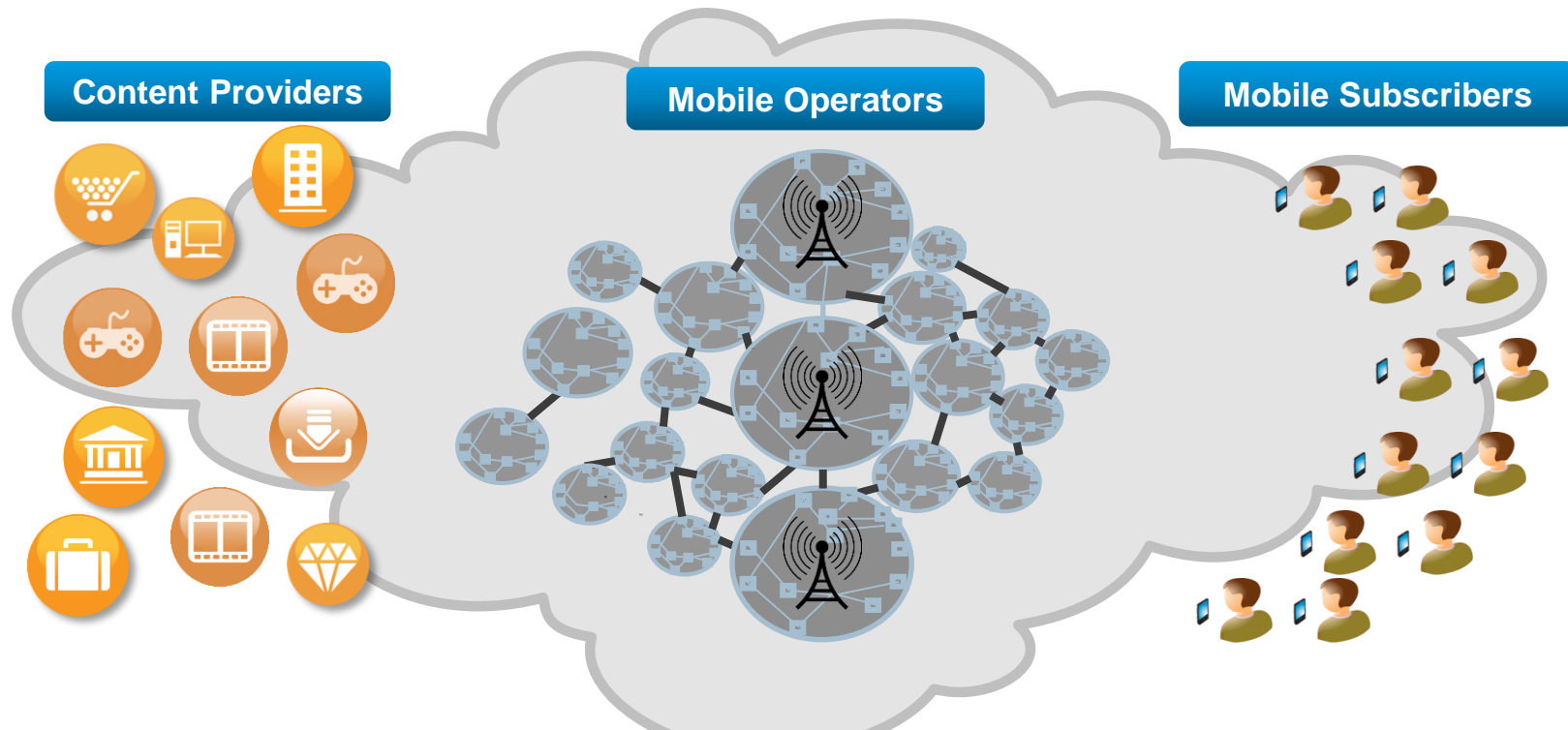
Hundreds of
Mobile Operators



Billions of
Mobile Subscribers

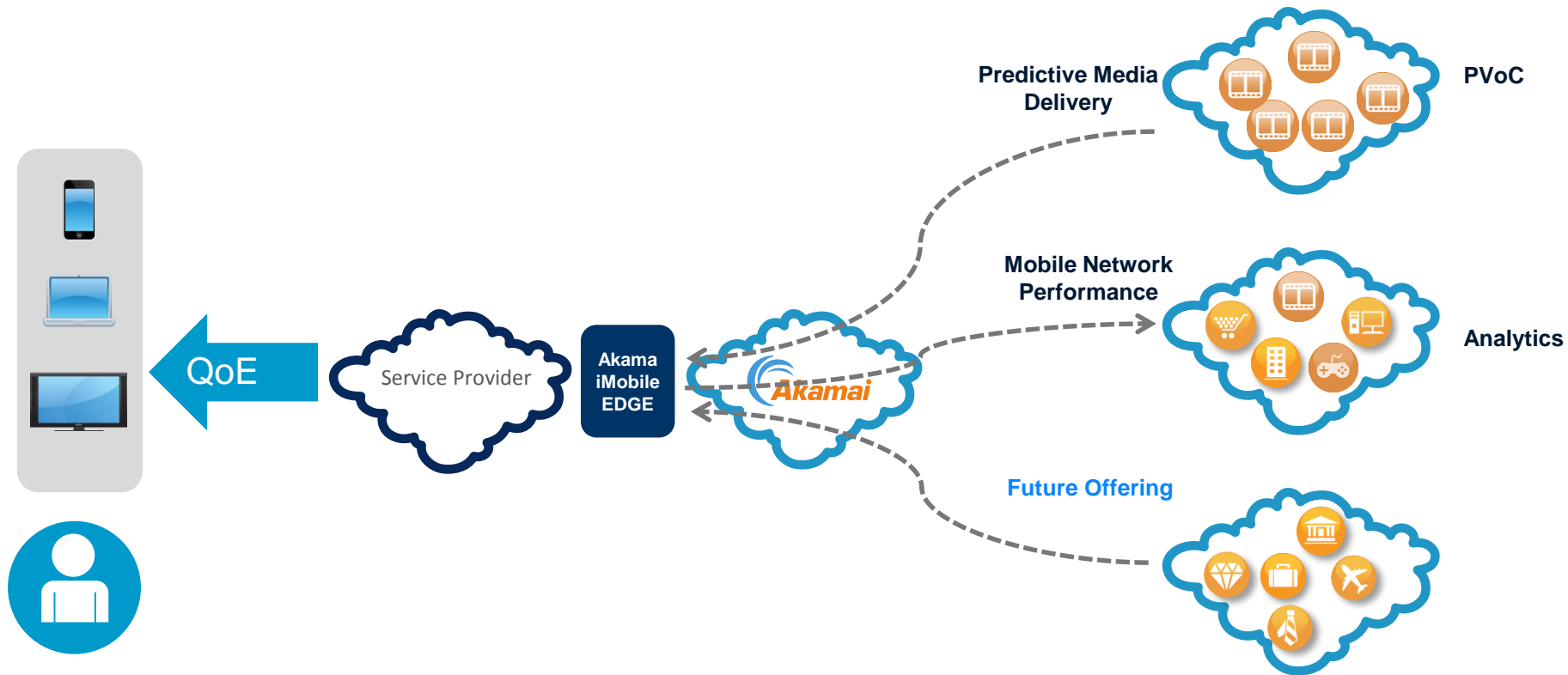


A CDN Can Bring API's and Relationships



A CDN provides one API for thousands of brands to access mobile network services in order to provide new and improved functionality for mobile subscribers

Mobile Solutions



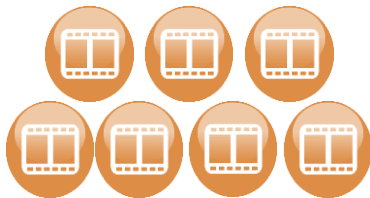
Challenge: How to Deliver High Quality Video in a Profitable Way?

Mobile Subscribers



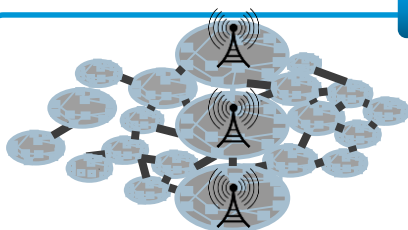
- Want access to more video on the go
- Want better and more consistent experience
- Don't want to think of their data limits or overage charges

Internet Services



- Expect better QoE
- Need to improve content discovery
- New revenue streams from mobile
- Increase video viewership & buzz

Mobile Network Operators

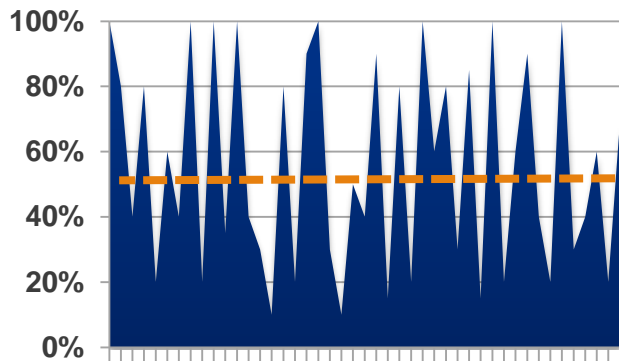


- Efficiently deliver data heavy video traffic
- Differentiate mobile services
- Provide a high quality video experience
- Better network utilization
- Launch new revenue generating services



Predictive Video over Cellular – A Better Delivery Model

Underutilized cellular network



50% utilized during peak times

Device storage

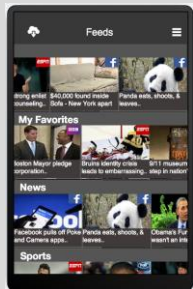


At least 1GB unused

Predictive Analytics



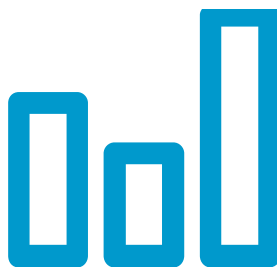
Viewership Behavior Data



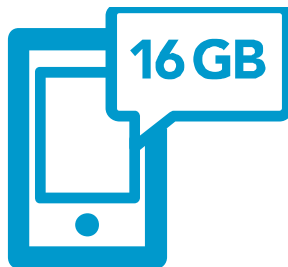
Use Cases:

1. Standalone application
2. Integration with TV offering
3. Sell data to media providers

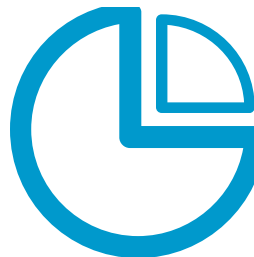
How We Make It Happen



Off-Peak Cellular
Capacity & Wi-Fi



Device
Storage



Predictive
Analytics



Smart Battery
Management

Mobile Network Operator Trials



kpn



StarHub



Cellcom



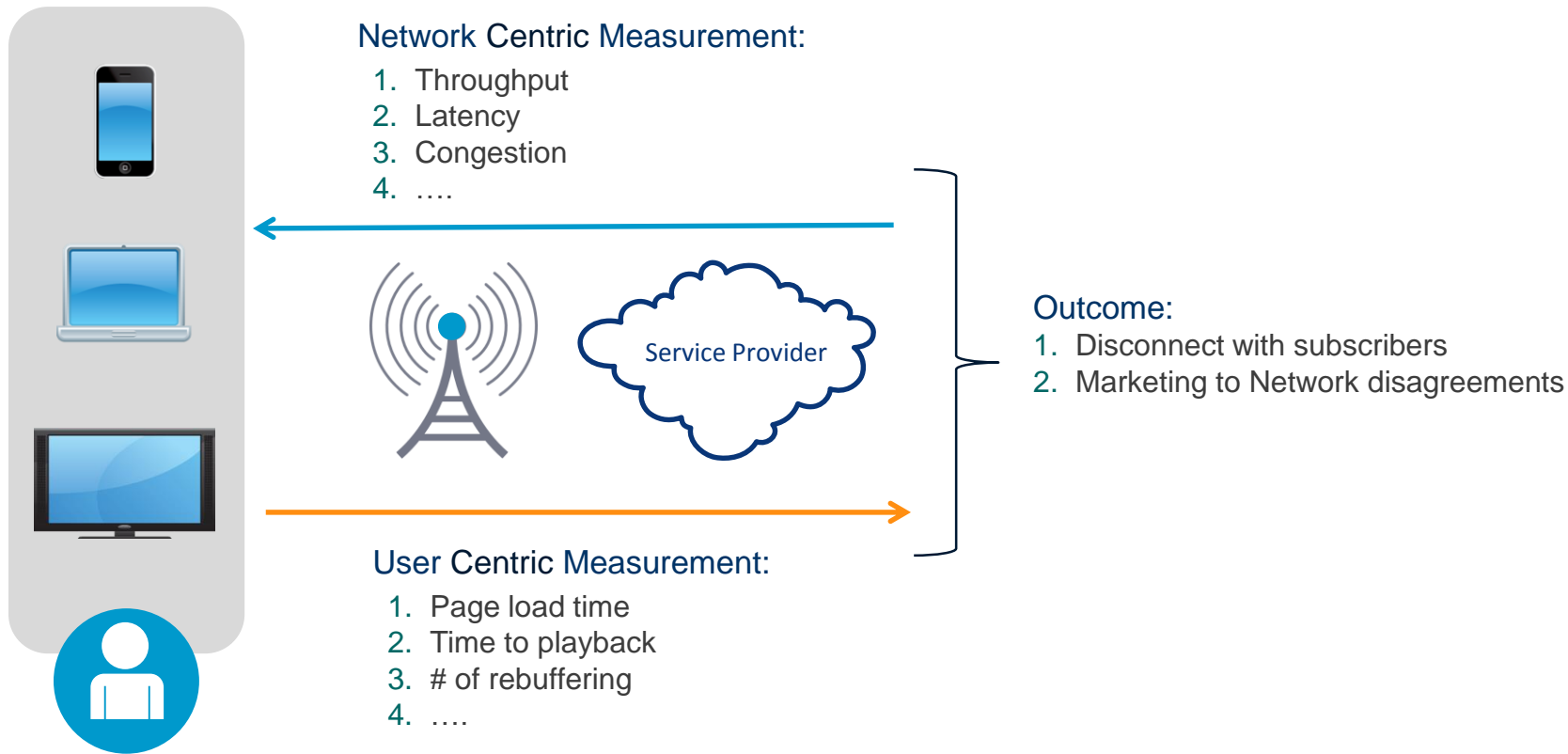
6 Months, 5 Trials, 500 Users, 15 Device Types (iOS & Android)

Perception was an increase in quality for ALL mobile video

Increased mobile video consumption by 44%

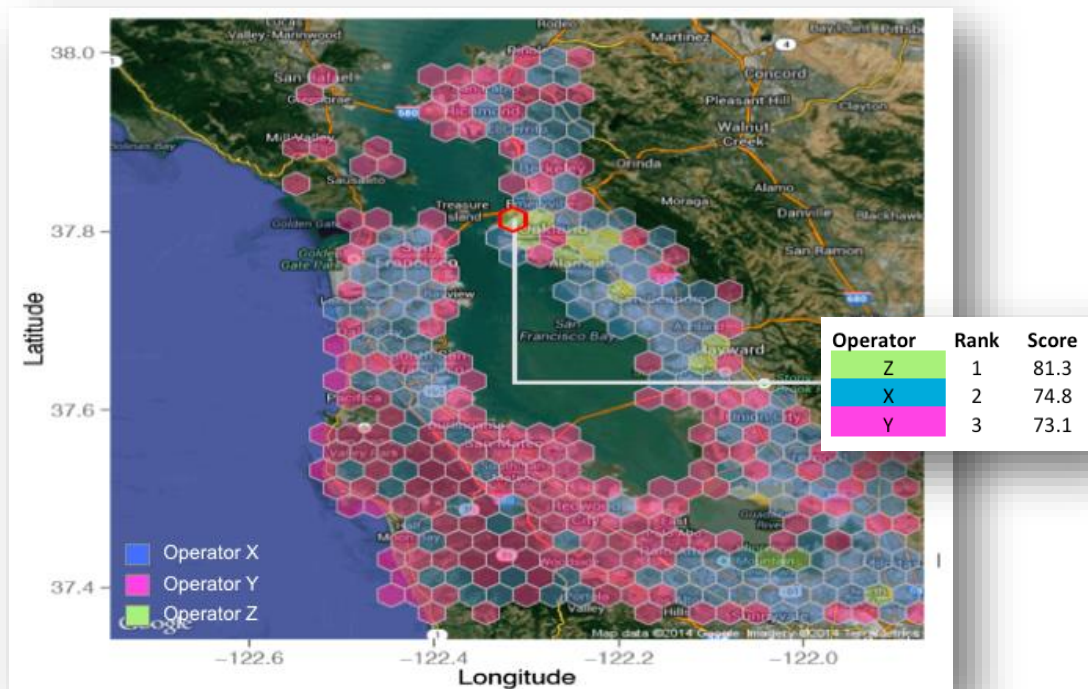
Value in no buffering and constant availability of videos

Challenge: How Network Capabilities Translate to Mobile Experience and Competitive Intelligence?



Solution: Mobile Performance Analytics

Better Network Visibility and Competitive Benchmarking



Web

Metrics

- Backend latency
- DNS lookup time
- DOM load time
- DOM interactive time
- DOM processing time
- First byte download
- First paint byte
- Page load time
- SSL start time
- TCP connection time

Dimensions

- Browser
- Continent
- Country
- IP Address
- Network Name
- Network type
- Timestamp
- OS

Media

Quality

- Play Attempts
- Video Startup Time
- Video Availability
- Average Bitrate
- Re-buffering
- Dropped Frames
- Errors
- Connection Speed

Engagement

- Viewers
- Visits
- Plays
- Play Duration
- Play Percentage
- Completion Rate
- Plays Abandoned

Challenge

Optimizing content delivery of encrypted content



SSL growth - The volume of secure SSL content is increasing very fast

Networks have no visibility into encrypted content

Content servers have no direct 'network condition' feedback for encrypted data flows



Without visibility into the content, the network **CANNOT** optimize delivery on its own

Without the network feedback, content servers **CANNOT** adapt content according to network conditions

Existing systems for network optimization **CANNOT** work with SSL content

Disclaimer: encrypted content optimization will only be done with content provider approval



Solution

Radio Aware SSL Enrichment

1

Collect **real-time radio status** information, per cell.

2

Send the data using **SSL Enrichment**, as part of the SSL connection, to the CDN

3

Continually optimize the content for mobile delivery in the CDN. And send.



Benefits

Superior mobile user experience

Higher network utilization

Lower network congestion

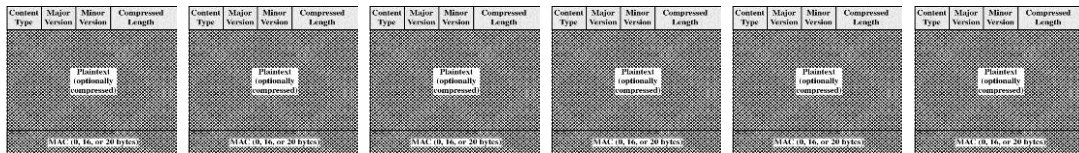


SSL Enrichment

SSL communication is arranged in a series of SSL Records

SSL Records cannot be altered

SSL Record payload is inaccessible



Meta data enrichment



Application layer library and APIs: no modifications in standard kernel, TCP or SSL layers

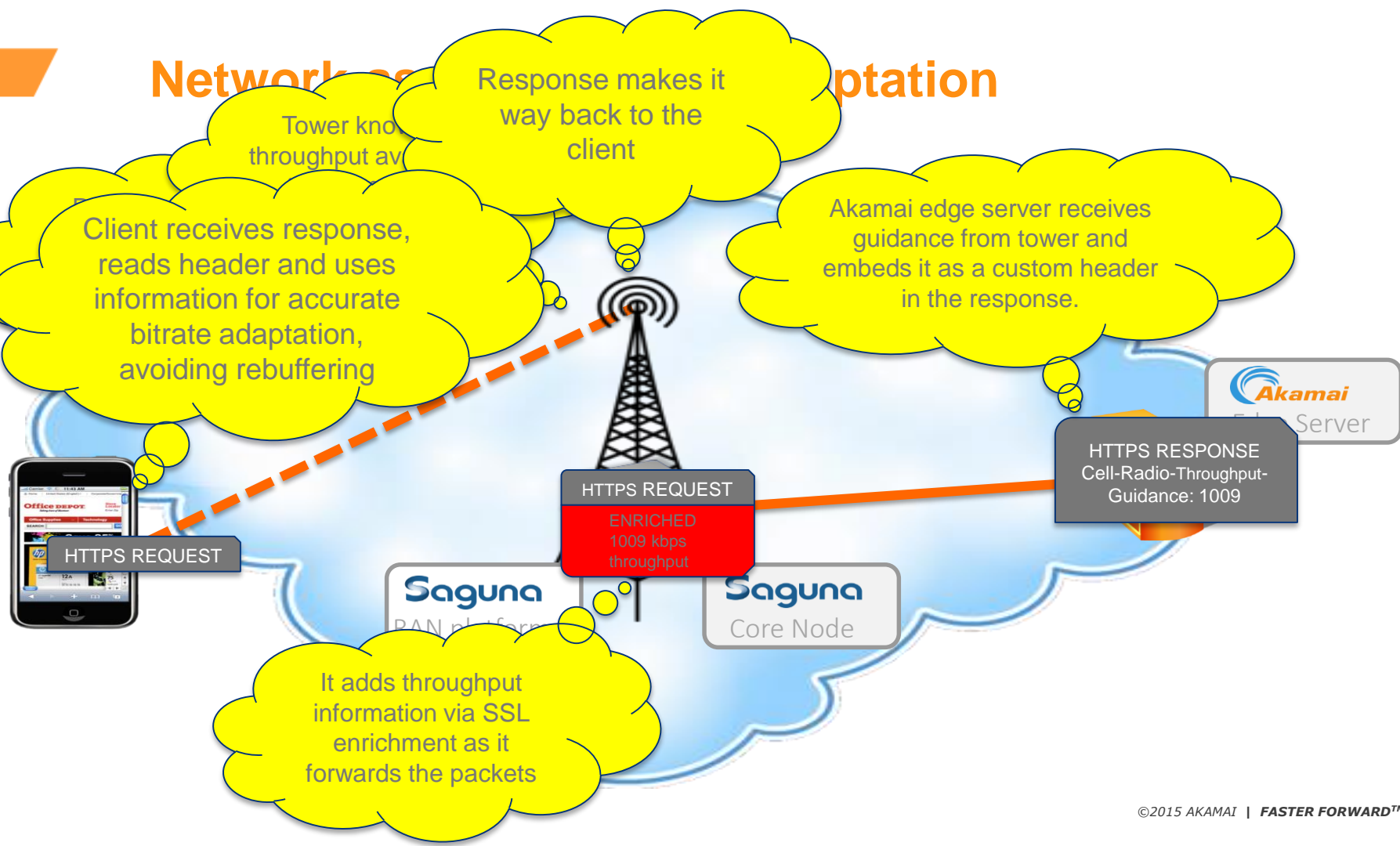
Inject

Insert an enrichment record into the SSL connection

Retrieve

Remove the enrichment record and send the original record flow to the SSL layer

Network adaptation



Winner - Mobile World Congress 2015

Network Intelligence Awards 2015 - MWC 2015

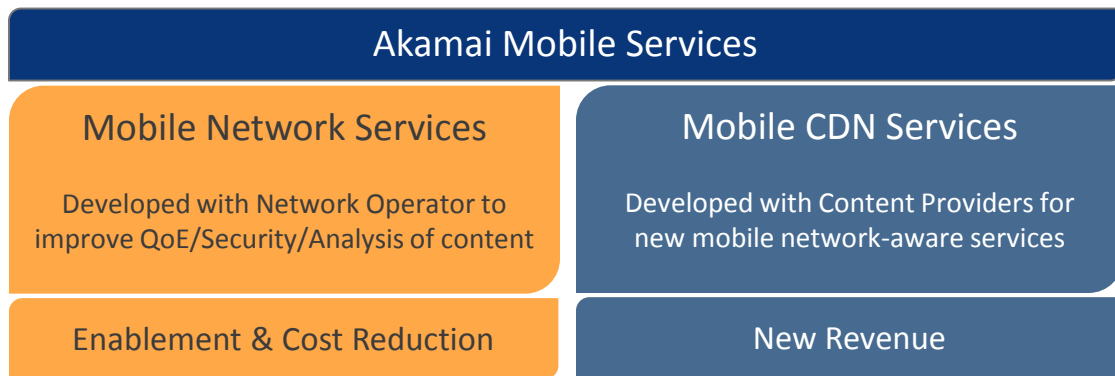
<http://www.nialliance.org/news-nialliance/the-network-intelligence-alliance-announces-network-intelligence-awards-2015-winners-at-mobile-world-congress-in-barcelona/>



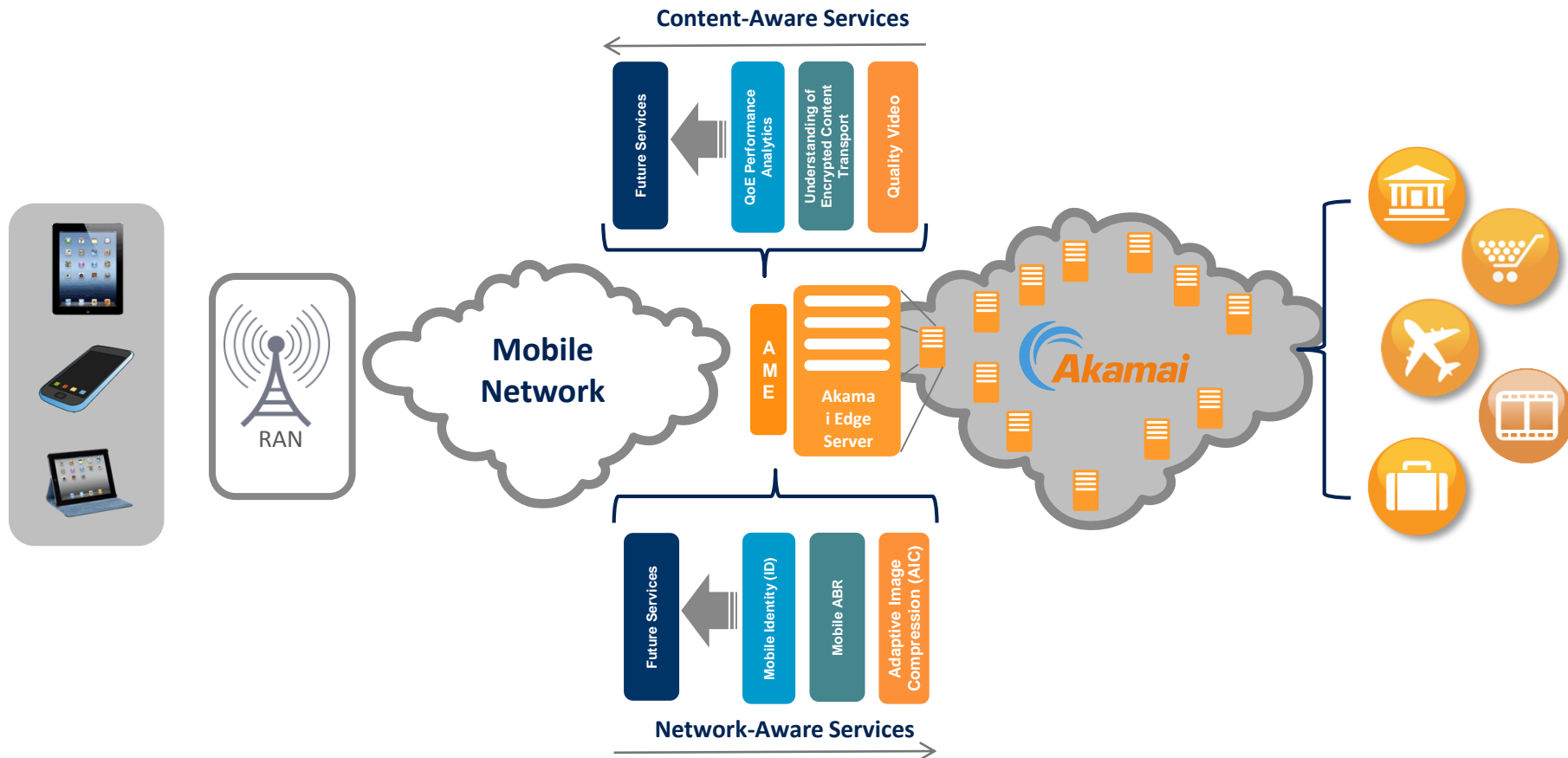
Akamai Mobile Vision

Collaborate with Mobile Operators to develop unique solutions for operators while leveraging Akamai's

- Intelligent Platform Scale (+170,000 servers globally)
- Content delivered (15%-30% of web traffic daily)
- Content provider relationships (over 5,000 of the worlds top brands)



Akamai Mobile Edge (AME) Architecture



Akamai Mobile Vision

Akamai Mobile Edge

- An NFV Platform
- Based on industry standard building blocks
- Builds on Akamai's global infrastructure

In order to deliver three classes of services:

1. MNO Services (Content-Aware Services)
 1. Ex: Low latency live stream delivery
2. MNO Services (Subscriber-Aware Services)
 1. Ex: Enforce lowest quality video, apply age gating
3. Mobile CDN Services (Network-Aware Services)
 1. Ex: Throughput hinting and congestion avoidance

Smart Clients and Multi-Sourced Delivery

